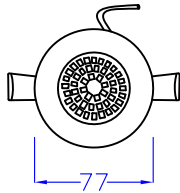
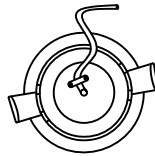


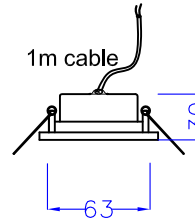
LED CLR dimensions



Front

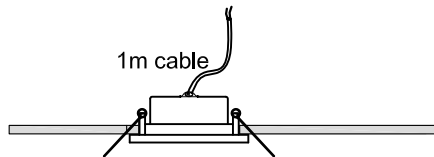
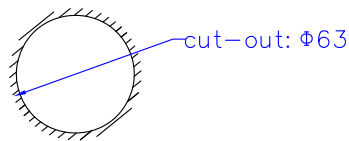


Rear



Profile

Application



Specification

Optics parameter	Luminous	Luminous efficacy	Light angle	Light decay	Lamp CRI	Lamp CCT
	270lm	>90lm/W	120°	<30% @25,000H	>75	WW-3000K NW-4000K CW-6000K
Electrical parameter	Power	Input voltage	Frequency	Power efficiency	Mode	
	3W	100-240VAC	50 / 60Hz	>90%	CC	
Chip parameter	LED model	LED quantity				
	SMD	48				
Physical parameter	Light material	Light finishing	Working temperature			
	Al. + PC	AL. colour	-20 ~ 65°C			
Package	Carton size	Carton weight				
	530x290x190mm	7kg / 100pcs				